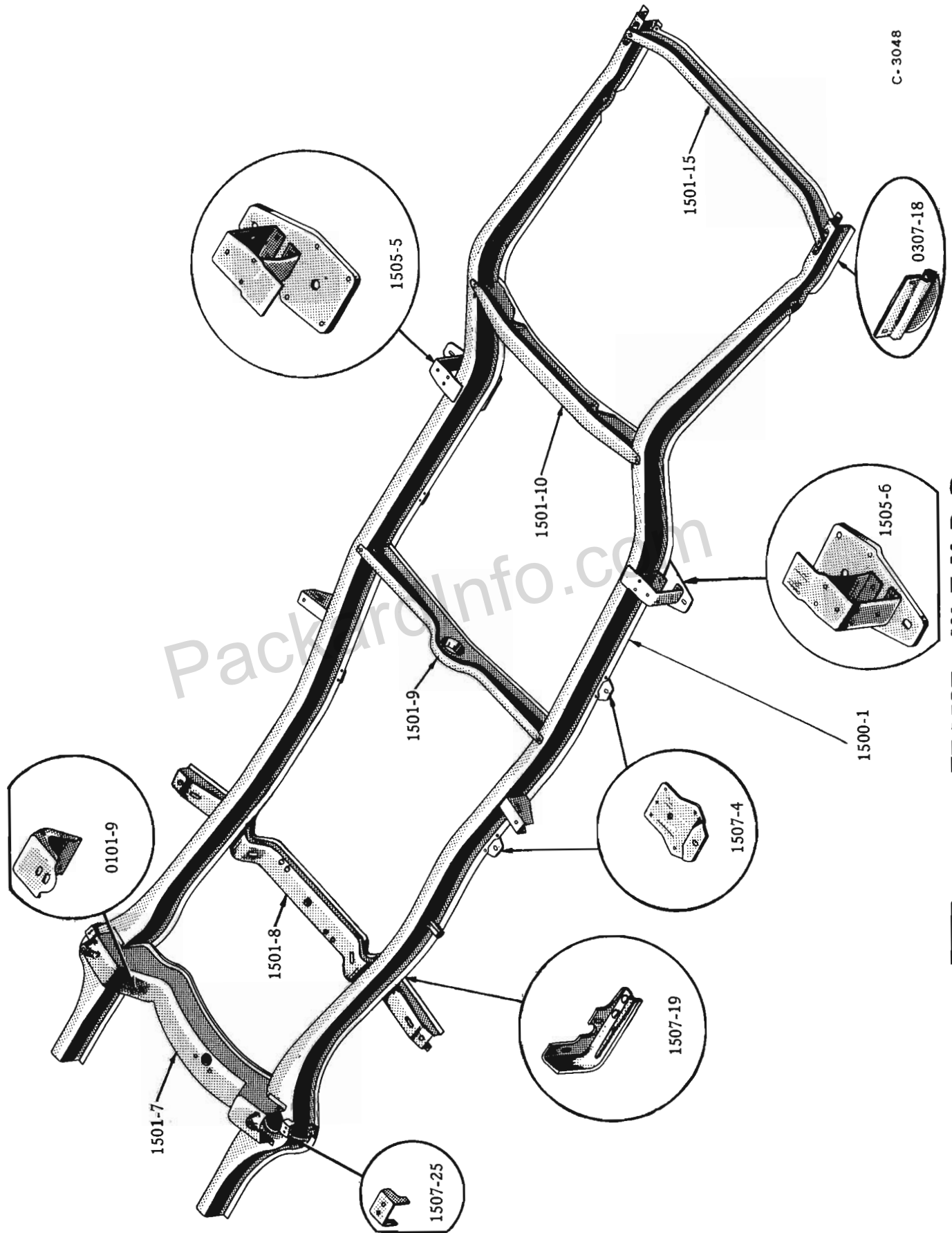


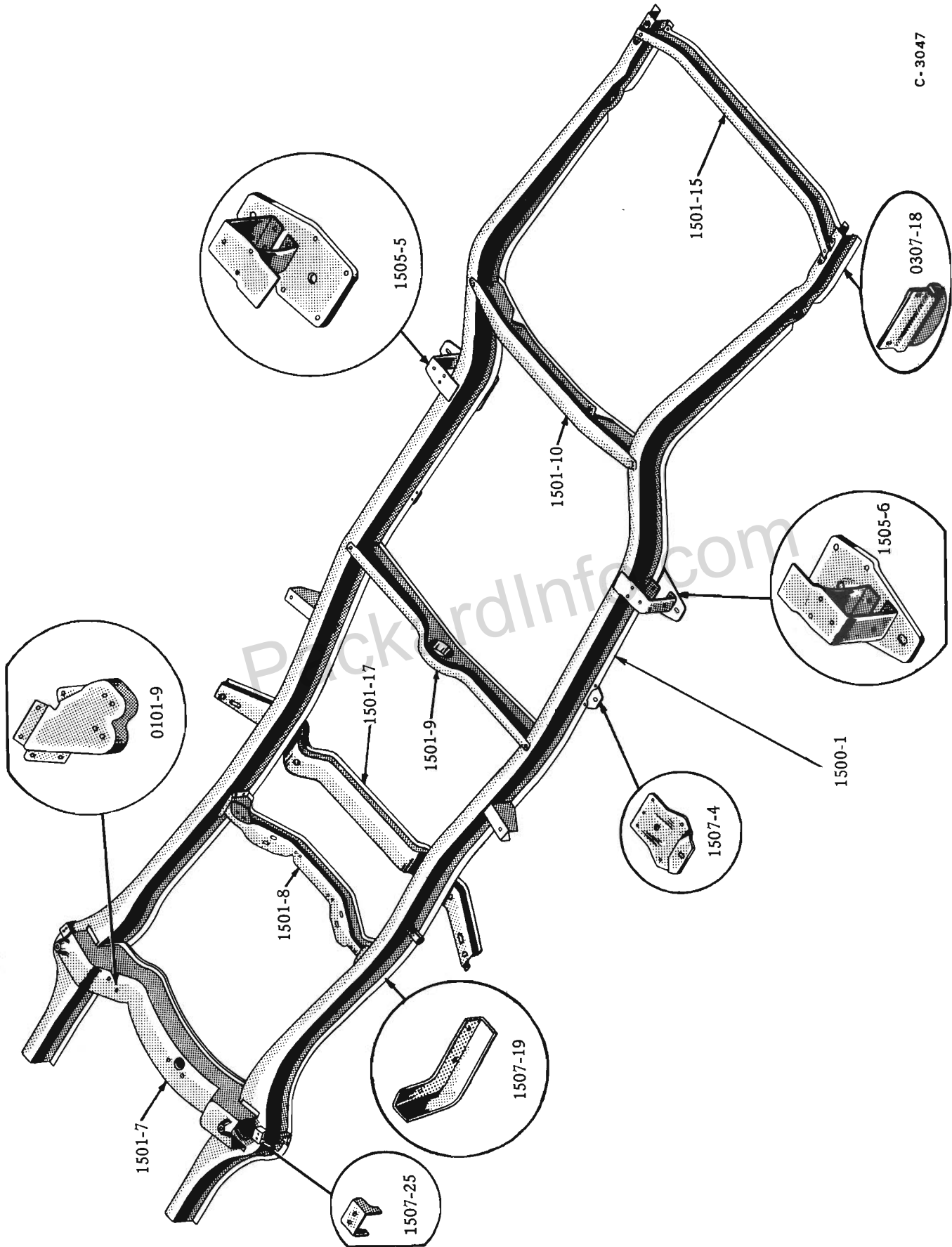
FRAME AND SPRINGS

Plate 15-1



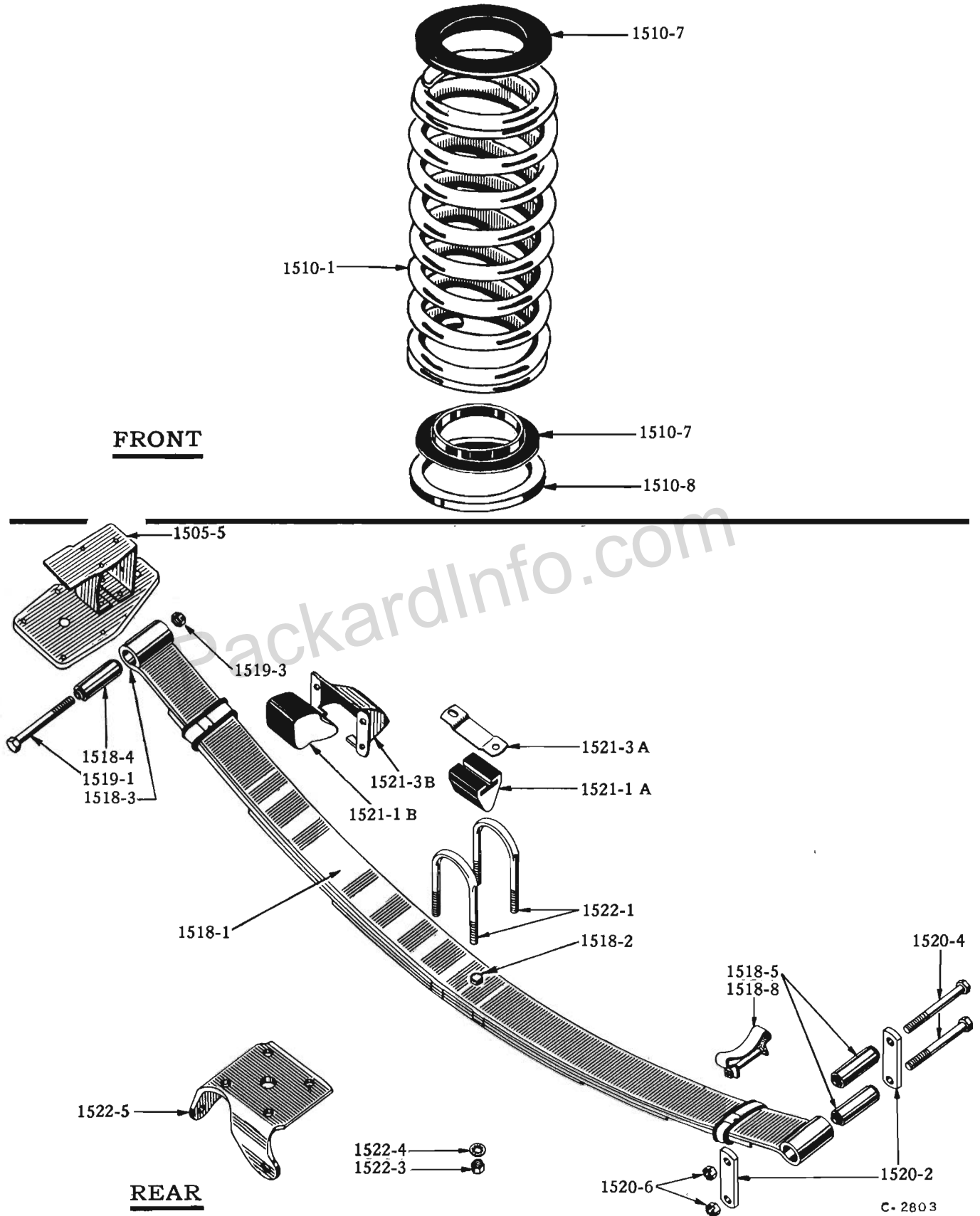
C-3048

FRAME - W-F-Y-D-P



C-3047

TYPICAL FRAME - C-K



FRONT and REAR SPRINGS

FRAME AND SPRINGS

ILLUST. NUMBER	PART NUMBER	CHANGE	DESCRIPTION	MODELS	PER CAR
1500- FRAME ASSEMBLY (Plates 15-1, 2)					
FRAMES ARE FURNISHED COMPLETE WITH BODY MOUNTING BRACKETS AND REAR SPRING FRONT HANGERS.					
1500-1	535469		FRAME - W-F - LHC	16G	1
1500-1	535471		FRAME - W-F - RHC	16G	1
1500-1	536294		FRAME - C - LHC } INCLS. ENGINE FRONT	16G, 6H	1
1500-1	536296		FRAME - K - LHC } . . SUPT. BRACKET.	16G, 6H	1
1500-1	534067		FRAME - D - LHC	16G	1
1500-1	535218		FRAME - D - RHC	16G	1
1500-1	535470		FRAME - Y - LHC	6H	1
1500-1	535472		FRAME - Y - RHC	6H	1
1500-1	1539103		FRAME - W-F - LHC	56G, 56B, 56H	1
1500-1	1539104		FRAME - W-F - RHC	56G, 56B, 56H	1
1500-1	1539106		FRAME - C - LHC } INCLS. ENGINE FRONT	56G, 56B	1
1500-1	1539107		FRAME - K - LHC } . . SUPT. BRACKET.	56G, 56B	1
1500-1	1539927		FRAME - D - LHC	56G, 56B, 56H	1
1500-1	1539928		FRAME - D - RHC	56G, 56B, 56H	1
1500-1	1539931		FRAME - Y - LHC	56H	1
1500-1	1539932		FRAME - Y - RHC	56H	1
1500-1	1539088		FRAME - K - LHC } INCLS. ENGINE FRONT SUPT. BRACKET	56J	1
1500-1	1541807		FRAME - W-F - LHC	57G, 57B, 57H	1
1500-1	1541808		FRAME - W-F - RHC	57G, 57B, 57H	1
1500-1	1541813		FRAME - C - LHC } INCLS. ENGINE FRONT	57G, 57B, 57H	1
1500-1	1541814		FRAME - K - LHC } . . SUPT. BRACKET.	57G, 57B, 57H	1
1500-1	1541809		FRAME - D-P - LHC	57G, 57B, 57H	1
1500-1	1541810		FRAME - D-P - RHC	57G, 57B, 57H	1
1500-1	1541811		FRAME - Y - LHC	57H	1
1500-1	1541812		FRAME - Y - RHC	57H	1
1500-1	1543500		FRAME - Y - LHC	57L	1
1500-1	1543501		FRAME - Y - RHC	57L	1
1501-1	1543548		FRAME - P - LHC	57L	1
1501-1	1543549		FRAME - P - RHC	57L	1
1501- FRAME CROSS MEMBERS (Plates 15-1, 2)					
1501-7	532729		MEMBER, FRONT CROSS	16G, 6H, 56G, 56B, 56H, 56J	1
1501-7	1542978		MEMBER, FRONT CROSS	57G, 57B, 57H, 57L	1
	----		RIVET, TO FRAME 3/8"X7/8"	ALL MODELS	4
1501-8	534732		MEMBER, ENGINE REAR SUPT. CROSS - W-F-Y-D	16G, 6H	1
1501-8	1539089		MEMBER, ENGINE REAR SUPT. CROSS - W-F-Y-D-P	56G, 56B, 56H, 57G, 57B, 57H	1
1501-8	532925		MEMBER, ENGINE REAR SUPT. CROSS - C-K	16G, 6H	1
1501-8	1539102		MEMBER, ENGINE REAR SUPT. CROSS - C-K	56G, 56B, 56H, 57G, 57B, 57H	1
1501-8	1539366		MEMBER, ENGINE REAR SUPT. CROSS - K	56J	1
1501-8	1539089		MEMBER, ENGINE REAR SUPT. CROSS - LHC	57L	1
1501-8	1539089		MEMBER, ENGINE REAR SUPT. CROSS - RHC (w/OD.)	57L	1
1501-8	1543502		MEMBER, ENGINE REAR SUPT. CROSS - RHC (w/AD.)	57L	1
	G181385		BOLT, TO FRAME 3/8"-24X3"	ALL EXCEPT 57L	6
	G103026		NUT, HEX, 3/8"-24	ALL EXCEPT 57L	6
	41X570		WASHER, PLAIN 3/8"	ALL EXCEPT 57L	6
	G120382		WASHER, LOCK 3/8"	ALL EXCEPT 57L	6
	G181360		BOLT, TO FRAME 3/8"-24X3/4"	ALL EXCEPT 56J	8
	G451010		NUT, HEX, 3/8"-24	ALL EXCEPT 56J	8
1501-9	531916		MEMBER, PROP. SHAFT SUPT. CROSS	ALL MODELS	1
	----		RIVET, TO FRAME 5/16"X3/4"	ALL MODELS	4
1501-10	531949		MEMBER, REAR SHOCK ABSORBER CROSS (USE 1539858)	16G, 6H	1
1501-10	1539858		MEMBER, REAR SHOCK ABSORBER CROSS	56G, 56B, 56H, 56J	1
1501-10	1541839		MEMBER, REAR SHOCK ABSORBER CROSS	57G, 57B, 57H, 57L	1
	----		RIVET, TO FRAME 5/16"X3/4"	ALL MODELS	4
1501-15	531951		MEMBER, GAS TANK CROSS - EXCEPT D-P	ALL MODELS	1
1501-15	534066		MEMBER, GAS TANK CROSS - D-P	ALL EXCEPT 6H, 56J	1
	----		RIVET, TO FRAME 5/16"X7/8"	ALL MODELS	8

FRAME AND SPRINGS

1510

ILLUST. NUMBER	PART NUMBER	CHANGE	DESCRIPTION	MODELS	PER CAR
1501- FRAME CROSS MEMBERS-Cont'd. (Plates 15-1, 2)					
1501-17	534923		MEMBER, BODY FRONT PILLAR SUPT. CROSS - C-K	ALL EXCEPT 56J, 57L	1
1501-17	539043		MEMBER, BODY FRONT PILLAR SUPT. CROSS - K	56J.	1
	G181360		BOLT, TO FRAME 3/8"X24X3/4"	ALL EXCEPT 57L	8
	G451010		NUT, HEX. 3/8"-24	ALL EXCEPT 57L	8
1505- REAR SPRING HANGERS (Plates 15-1, 2, 3)					
1505-5	532108		HANGER W/BODY BRACKET, FRONT RIGHT, REAR SPRING	ALL MODELS	1
1505-6	532109		HANGER W/BODY BRACKET, FRONT LEFT, REAR SPRING	ALL MODELS	1
	----		RIVET, TO FRAME 3/8"X1"	ALL MODELS	8
1507- FRAME MISCELLANEOUS ATTACHMENTS (Plates 15-1, 2)					
1507-4	531215		BRACKET, FRAME BODY MOUNTING - EXCEPT C	ALL MODELS	4
1507-4	531215		BRACKET, FRAME BODY MOUNTING - C	16G, 6H, 56G, 56B, 57G, 57B, 57H	2
	----		RIVET, TO FRAME 5/16"X13/16" - EXCEPT C	ALL MODELS	16
	----		RIVET, TO FRAME 5/16"X13/16" - C	16G, 6H, 56G, 56B, 57G, 57B, 57H	8
1507-19	535192P		SHIELD, INNER, PEDAL SPLASH - EXCEPT C-K - LHC	ALL EXCEPT 56J	1
	535193P		SHIELD, INNER, PEDAL SPLASH - EXCEPT C-K - RHC	ALL EXCEPT 56J	1
1507-19	533195P		SHIELD, INNER, PEDAL SPLASH - C-K - LHC	ALL EXCEPT 57L	1
	G177999		SCREW, TO FRAME No. 14X1/2".	ALL MODELS	2
	----		SHIELD, PEDAL PROTECTOR - SEE BODY PARTS CATALOG (GROUPS 2138, 2338 AND 2538)	ALL MODELS	*
1507-25	529332		BRACKET, SUSPENSION UPPER ARM BUMPER - WELDED	ALL MODELS	2
1510- FRONT SPRINGS (Plate 15-3)					
PART NO. OF COIL SPRINGS IS STAMPED ON THE END COIL.					
1510-1	526128		SPRING, FRONT - STD. - EXCEPT D	16G6	2
1510-1	526129		SPRING, FRONT - HD. - EXCEPT D	16G6	2
1510-1	526133		SPRING, FRONT - D	16G6	2
1510-1	526134		SPRING, FRONT - STD. - W-F-Y (EXCEPT 1ST 100 16G8 CANADIAN CARS)	16G8, 6H	2
1510-1	526126		SPRING, FRONT - STD. - W-F (CANADA) BEFORE CAR SERIAL 8,957,725	16G8	2
1510-1	526125		SPRING, FRONT - HD. - W-F-Y - NOTE 1	16G8, 6H	2
1510-1	526130		SPRING, FRONT - HD. - W-F-Y - NOTE 2	16G8, 6H	2
1510-1	526127		SPRING, FRONT - STD. - C-K	16G8, 6H	2
1510-1	526130		SPRING, FRONT - HD. - C-K	16G8, 6H	2
1510-1	526130		SPRING, FRONT - D	16G8	2

NOTES {

- * - USE AS REQUIRED.
- 1 - USED ON MODELS 16G8 | 6H BEFORE CAR SERIALS 8,425,572 | 6,169,552
- 2 - USED ON AND AFTER CAR SERIALS IN NOTE 1.

FRAME AND SPRINGS

ILLUST. NUMBER	PART NUMBER	CHANGE	DESCRIPTION	MODELS	PER CAR
1510- FRONT SPRINGS-Cont'd. (Plate 15-3)					
1510-1	526128		SPRING, FRONT - STD. - W2-F2-C3 - NOTE 3	56G	2
1510-1	1539500		SPRING, FRONT - STD. - W2-F2-C3 - NOTE 4	56G	2
1510-1	1539500		SPRING, FRONT - STD. - EXCEPT W2-F2-C2-D	56G	2
1510-1	526133		SPRING, FRONT - D	56G	2
1510-1	526129		SPRING, FRONT - HD. - EXCEPT D	56G	2
1510-1	526127		SPRING, FRONT - STD. - C3 - NOTE 3	56B	2
1510-1	1539501		SPRING, FRONT - STD. - C3 - NOTE 4	56B	2
1510-1	526134		SPRING, FRONT - STD. - W2-F2 - BEFORE } FIRST 450	56B	2
1510-1	1539501		SPRING, FRONT - STD. - W2-F2 - AFTER } VEHICLES	56B	2
1510-1	1539501	●	SPRING, FRONT - STD. - EXCEPT W2-F2-C3-D.	56B, 56H	2
1510-1	526130		SPRING, FRONT - D	56B, 56H	2
1510-1	526130		SPRING, FRONT - HD. - EXCEPT D	56B, 56H	2
1510-1	526122	◆	SPRING, FRONT - STD.	57B, 57H	2
1510-1	526124		SPRING, FRONT - STD.	56J	2
1510-1	526125		SPRING, FRONT - HD.	56J	2
1510-1	1541865		SPRING, FRONT - STD. - W4-F4-W6-F6	57G	2
1510-1	1539500		SPRING, FRONT - STD. - W2-F2-C-K	57G	2
1510-1	526133		SPRING, FRONT - D-P	57G	2
1510-1	526129		SPRING, FRONT - HD. - EXCEPT D-P	57G	2
1510-1	1541866		SPRING, FRONT - STD. - W-F-Y	57B, 57H	2
1510-1	1539501		SPRING, FRONT - STD. - C-K	57B, 57H	2
1510-1	526130		SPRING, FRONT - D-P	57B, 57H, 57L	2
1510-1	526130		SPRING, FRONT - HD. EXCEPT D-P	57B, 57H, 57L	2
1510-1	1541867		SPRING, FRONT - Y	57L	2
● - NOT USED WITH AIR COND. ◆ - USED WITH AIR COND.					
1510-7	526249		INSULATOR, FRONT SPRING - RUBBER	ALL MODELS	4
1510-8	526830		SPACER, FRONT SPRING - LEFT SIDE	56J	1
1510-8	526830		SPACER, FRONT SPRING - K7	57H	2
1510-8	526830		SPACER, FRONT SPRING - Y-P - NOTE 7	57H, 57L	2
1510-8	526830		SPACER, FRONT SPRING - W-Y-F (W/AIR COND.)	57B, 57H, 57L	2
1518-REAR SPRINGS (Plate 15-3)					
1518-1	536510		SPRING w/BUSHING, REAR - STD. - EXCEPT D	16G6	2
1518-1	533525		SPRING w/BUSHING, REAR - HD. - EXCEPT D - NOTE 5	16G6	2
1518-1	536512		SPRING w/BUSHING, REAR - HD. - EXCEPT D - CANADA - NOTE 6	16G6	2
1518-1	536511		SPRING w/BUSHING, REAR - D	16G	2
1518-1	536514		SPRING w/BUSHING, REAR - STD. - EXCEPT D	16G8, 6H	2
1518-1	533524		SPRING w/BUSHING, REAR - HD. - EXCEPT D - NOTE 5	16G8, 6H	2
1518-1	536513		SPRING w/BUSHING, REAR - HD. - EXCEPT D - U.S.A. - NOTE 6	16G8, 6H	2
1518-1	1540059		SPRING w/BUSHING, REAR - STD. - EXCEPT D	56G	2
1518-1	536512		SPRING w/BUSHING, REAR - HD. - EXCEPT D	56G	2
1518-1	536511		SPRING w/BUSHING, REAR - D	56G, 56B, 56H	2
1518-1	1539487	●	SPRING w/BUSHING, REAR - STD. EXCEPT D	56B, 56H, 56J	2
1518-1	1540059	◆	SPRING w/BUSHING, REAR	56B, 56H	2
1518-1	536513		SPRING w/BUSHING, REAR - HD. - EXCEPT D	56B, 56H, 56J	2
1518-1	1541917		SPRING w/BUSHING, REAR - STD. - W-F	57G	2
1518-1	1540059		SPRING w/BUSHING, REAR - STD. - C-K	57G	2
1518-1	536512		SPRING w/BUSHING, REAR - HD. - EXCEPT D-P	57G	2
● - NOT USED WITH AIR COND. ◆ - USED WITH AIR COND.					

NOTES	3 - USED ON MODELS	56G	56B	
	BEFORE CAR SERIALS	G-1,359,504	8,430,316	
	4 - USED ON AND AFTER CAR SERIALS IN NOTE 3.			
	5 - TYPE USING 7/8" O.D. FRONT BUSHING			
	USED ON MODELS	16G6	16G8	6H
	BEFORE CAR SERIALS	SOUTH BEND G-1,328,420	8,385,675	7,151,464
	CANADA G-758,437			
6 - TYPE USING 1 3/8" O.D. FRONT BUSHING USED ON AND AFTER CAR SERIALS IN NOTE 5.				
7 - DISCONTINUED ON MODEL 57H-Y AT CAR SERIAL 7,192,815				

FRAME AND SPRINGS

1519

ILLUST. NUMBER	PART NUMBER	CHANGE	DESCRIPTION	MODELS	PER CAR
1518- REAR SPRINGS-Cont'd. (Plate 15-3)					
1518-1	536511		SPRING w/BUSHING, REAR - D-P	57G, 57B, 57H, 57L	2
1518-1	1539487		SPRING w/BUSHING, REAR - STD. - EXCEPT D-P	57B	2
1518-1	1541916		SPRING w/BUSHING, REAR - STD. - W-Y-F	57H	2
1518-1	1539487		SPRING w/BUSHING, REAR - STD. - C-K	57H	2
1518-1	536513		SPRING w/BUSHING, REAR - HD. - EXCEPT D-P	57B, 57H, 57L	2
1518-1	1543707		SPRING w/BUSHING, REAR - STD. - Y	57L	2
1518-2	104X252		BOLT, CENTER 3/8"-24X1 3/4" - STD. - EXCEPT D	16G, 6H, 56G, 56B, 56H, 56J	2
1518-2	104X253		BOLT, CENTER 3/8"-24X1 7/8" - HD. - EXCEPT D	16G, 6H, 56G, 56B, 56H, 56J	2
1518-2	104X162		BOLT, CENTER 3/8"-24X2 1/4" - D	16G, 56G, 56B, 56H	2
1518-2	104X268		BOLT, CENTER 3/8"-24X1 1/2" - STD. - W-F	57G, 57B	2
1518-2	104X252		BOLT, CENTER 3/8"-24X1 3/4" - STD. - W-Y-F	57H, 57L	2
1518-2	104X252		BOLT, CENTER 3/8"-24X1 3/4" - STD. - C-K	57G, 57B, 57H	2
1518-2	104X253		BOLT, CENTER 3/8"-24X1 7/8" - HD. - EXCEPT D-P	57G, 57B, 57H, 57L	2
1518-2	104X162		BOLT, CENTER 3/8"-24X2 1/4" - D-P	57G, 57B, 57H, 57L	2
	G120369		NUT, HEX. 3/8"-24	ALL MODELS	2
1518-3	536516		LEAF, REAR SPRING MAIN (No.1) STD.	16G, 6H	2
1518-3	530992		LEAF, REAR SPRING MAIN (No.1) HD. - NOTE 5	16G, 6H	2
1518-3	536516		LEAF, REAR SPRING MAIN (No.1) HD. - NOTE 6	16G, 6H	2
1518-3	1539486		LEAF, REAR SPRING MAIN (No.1) STD. - EXCEPT D	56G, 56B, 56H, 56J	2
1518-3	536516		LEAF, REAR SPRING MAIN (No.1) D	56G, 56B, 56H	2
1518-3	536516		LEAF, REAR SPRING MAIN (No.1) HD. - EXCEPT D	56G, 56B, 56H, 56J	2
1518-3	1539483		LEAF, REAR SPRING MAIN (No.1) STD. - W-F	57G	2
1518-3	1539486		LEAF, REAR SPRING MAIN (No.1) STD. - C-K	57G	2
1518-3	536516		LEAF, REAR SPRING MAIN (No.1) D-P	57G, 57B, 57H, 57L	2
1518-3	1539486		LEAF, REAR SPRING MAIN (No.1) - EXCEPT D-P	57B, 57H, 57L	2
1518-3	536516		LEAF, REAR SPRING MAIN (No.1) HD. - EXCEPT D-P	57G, 57B, 57H, 57L	2
	536336		LEAF, AUXILIARY No. 1 - D-P	ALL EXCEPT 6H, 56J	2
	536337		LEAF, AUXILIARY No. 2 - D-P	ALL EXCEPT 6H, 56J	2
1518-4	536517		BUSHING, FRONT, REAR SPRING } STD.	16G, 6H	2
1518-5	527987		BUSHING, REAR, REAR SPRING } STD.	16G, 6H	4
1518-4, 5	527987		BUSHING, REAR SPRING - HD. - NOTE 5	16G, 6H	6
1518-4	536517		BUSHING, FRONT, REAR SPRING } HD. - NOTE 6	16G, 6H	2
1518-4	527987		BUSHING, FRONT, REAR SPRING } HD. - NOTE 6	16G, 6H	4
1518-4	1539484		BUSHING, FRONT, REAR SPRING - EXCEPT D-P } STD.	ALL EXCEPT 16G, 6H	2
1518-4	536517		BUSHING, FRONT, REAR SPRING - D-P } STD.	56G, 56B, 56H, 57G, 57B, 57H, 57L	2
1518-4	536517		BUSHING, FRONT, REAR SPRING - HD. - EXCEPT D-P	ALL EXCEPT 16G, 6H	2
1518-5	527987		BUSHING, REAR, REAR SPRING	ALL EXCEPT 16G, 6H	4
			LENGTH		
	530431X3		INSERT, REAR SPRING LEAF PLASTIC LINER OR 45 3/4"	ALL MODELS	2
	530431X4		INSERT, REAR SPRING LEAF PLASTIC LINER OR 35"	ALL MODELS	2
	530431X5		INSERT, REAR SPRING LEAF PLASTIC LINER OR 25"	ALL MODELS	2
1518-8	536757		CLIP KIT, REAR SPRING REBOUND - CONSISTS OF: 1-530180X2 STRAP 1-536763 LINER	ALL MODELS	4
1519- REAR SPRING BOLT (Plate 15-3)					
1519-1	1296X607		BOLT, FRONT, REAR SPRING 7/16"-20X4"	ALL MODELS	2
1519-3	G272600		NUT, LOCK 7/16"-20	ALL MODELS	2
	----		BUSHING, REAR SPRING FRONT BOLT - SEE SPRING BUSHING GROUP 1518	ALL MODELS	2

NOTES { 5 - TYPE USING 7/8" O.D. FRONT BUSHING, USED ON MODELS BEFORE CAR SERIALS SOUTH BEND 16G6 G-1,328,420 | 16G8 8,385,675 | 6H 7,151,464 CANADA G-758,437

6 - TYPE USING 1 3/8" O.D. FRONT BUSHING, USED ON AND AFTER CAR SERIALS IN NOTE 5.

FRAME AND SPRINGS

ILLUST. NUMBER	PART NUMBER	CHANGE	DESCRIPTION	MODELS	PER CAR
1520- REAR SPRING SHACKLE (Plate 15-3)					
1520-2	529169		SHACKLE, RIGHT, REAR SPRING - LHC	ALL MODELS	2
1520-2	529168		SHACKLE, LEFT, REAR SPRING - LHC.	ALL MODELS	2
1520-2	529168		SHACKLE, RIGHT, REAR SPRING - RHC	ALL EXCEPT 56J	2
1520-2	529169		SHACKLE, LEFT, REAR SPRING - RHC	ALL EXCEPT 56J	2
1520-4	G181415		BOLT, SHACKLE 7/16" - 20X4"	ALL MODELS	4
1520-6	G272600		NUT, LOCK 7/16"-20	ALL MODELS	4
----			BUSHING, REAR SPRING SHACKLE - SEE SPRING		
			BUSHING - GROUP 1518	ALL MODELS	4
1521- REAR SPRING BUMPER (Plate 15-3)					
1521-1A	530333		BUMPER, REAR AXLE	16G6, 56G, 57G	2
1521-1B	532406		BUMPER, REAR SPRING	ALL EXCEPT 16G6, 56G, 57G	2
1521-1A	530333		BUMPER, REAR AXLE - D-P	56B, 56H, 57B, 57H, 57L	2
1521-1A	1540508		BUMPER, REAR AXLE - EXCEPT D	56B, 56H, 56J, 57B, 57H, 57L	2
1521-3A	532118P		RETAINER, REAR AXLE BUMPER	ALL MODELS	2
1521-3B	532407		RETAINER, REAR SPRING BUMPER	ALL EXCEPT 16G6, 56G, 57G.	2
	G173741		SCREW, TO FRAME 5/16"-18X1/2"	ALL MODELS	*
	G174907		SCREW, TO FRAME 1/4"-20X1/2"	ALL EXCEPT 16G6, 56G, 57G	*
1522- REAR SPRING CLIP, PLATE AND SEAT (Plate 15-3)					
1522-1	527985		CLIP OR U BOLT, REAR SPRING } LENGTH		
			- STD. - EXCEPT D-P }	4 7/8"	16G, 56G, 57G. 4
1522-1	535732		CLIP OR U BOLT, REAR SPRING } NOTE 3		
			- HD. - EXCEPT D-P }	5 1/2"	16G, 56G, 57G. 4
1522-1	535732		CLIP OR U BOLT, REAR SPRING - D-P	5 1/2"	16G, 56G, 57G. 4
1522-1	535733		CLIP OR U BOLT, REAR SPRING - D-P	5 3/4"	16G8, 56B, 56H, 57B, 57H, 57L 4
1522-1	527986		CLIP OR U BOLT, REAR SPRING }	5"	ALL EXCEPT 16G6, 56G, 57G 4
			- STD. - EXCEPT D-P }		
1522-1	535733		CLIP OR U BOLT, REAR SPRING } NOTE 4		
			- HD. - EXCEPT D-P }	5 3/4"	ALL EXCEPT 16G6, 56G, 57G 4
1522-3	197402		NUT, HEX. 3/8"-24 (FOR 527985 AND 535732).	16G, 56G, 57G.	8
1522-3	674899		NUT, HEX. 7/16"-20 (FOR 527986 AND 535733)	ALL EXCEPT 16G6, 56G, 57G.	8
1522-4	----		WASHER, SHAKEPROOF 3/8"	16G, 56G, 57G.	8
1522-4	G136857		WASHER, SHAKEPROOF 7/16"	ALL EXCEPT 16G6, 56G, 57G.	8
1522-5	531914		PLATE, RIGHT, REAR SPRING CLIP } FOR 527985 &	16G, 56G, 57G.	1
	531915		PLATE, LEFT, REAR SPRING CLIP } 535732	16G, 56G, 57G.	1
1522-5	532076		PLATE, RIGHT, REAR SPRING CLIP } FOR 527986 &	ALL EXCEPT 16G6, 56G, 57G.	1
1522-6	532077		PLATE, LEFT, REAR SPRING } 535733 ILLUSTR.		
			CLIP } GROUP 1525	ALL EXCEPT 16G6, 56G, 57G.	1

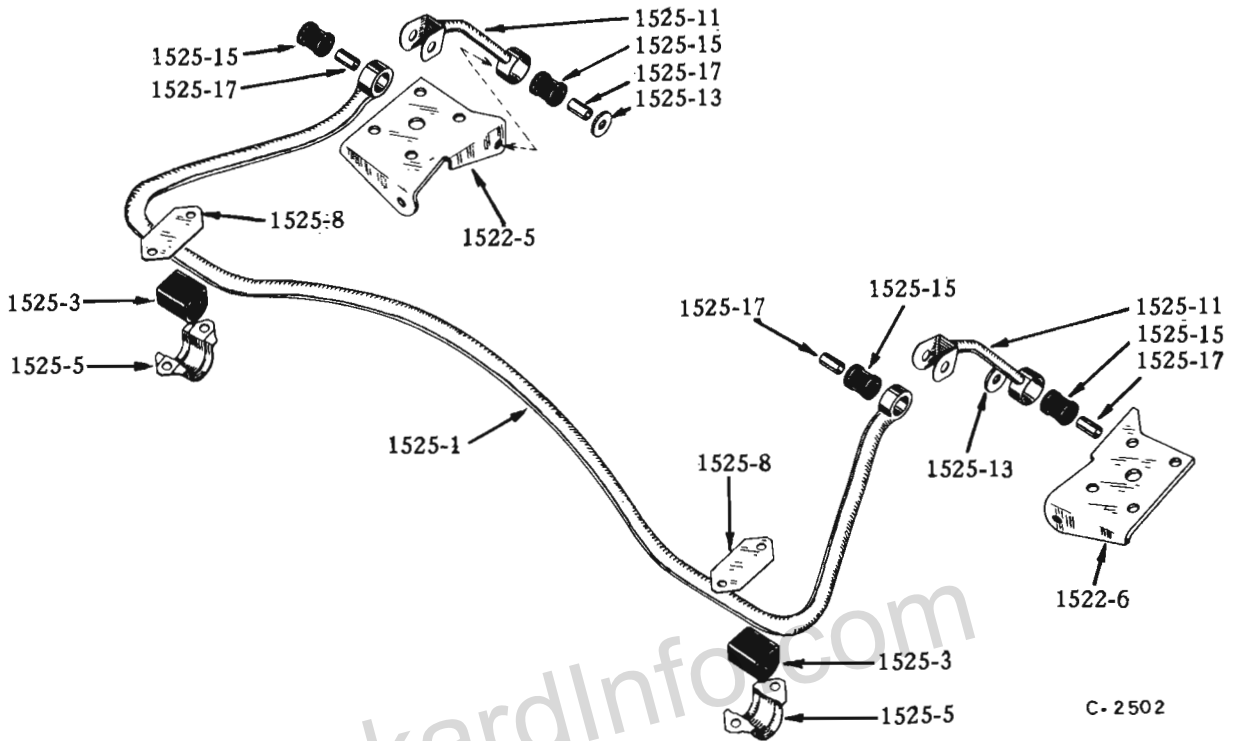
NOTES { * - USE AS REQUIRED.
 3 - USED ON MODELS BEFORE CAR SERIALS G-1,359,504 | 56B 8,430,316
 4 - USED ON AND AFTER CAR SERIALS IN NOTE 3.

FRAME AND SPRINGS

1525

ILLUST. NUMBER	PART NUMBER	CHANGE	DESCRIPTION	MODELS	PER CAR
----------------	-------------	--------	-------------	--------	---------

1525- REAR STABILIZER



C- 2502

1525-1	532152	SHAFT, STABILIZER - Y	6H, 56H, 57H, 57L	1
1525-3	522518	BUSHING, STABILIZER SHAFT - Y	6H, 56H, 57H, 57L	2
1525-5	525026	BRACKET, STABILIZER SHAFT BUSHING - Y	6H, 56H, 57H, 57L	2
1525-8	525025	PLATE, BRACKET	6H, 56H, 57H, 57L	2
	G181370	BOLT, TO FRAME 3/8"-24X1 1/4"	6H, 56H, 57H, 57L	4
	G120369	NUT, HEX. 3/8"-24	6H, 56H, 57H, 57L	4
	G120394	WASHER, PLAIN 3/8"	6H, 56H, 57H, 57L	1
	G120382	WASHER, LOCK 3/8"	6H, 56H, 57H, 57L	4
1525-11	532066	LINK, RIGHT, STABILIZER SHAFT - Y	6H, 56H, 57H, 57L	1
1525-11	532067	LINK, LEFT, STABILIZER SHAFT - Y	6H, 56H, 57H, 57L	1
	G181404	BOLT, UPPER 7/16"-20X1 7/8"	6H, 56H, 57H, 57L	2
	G186330	BOLT, LOWER 7/16"-20X2 1/8"	6H, 56H, 57H, 57L	2
	G271506	NUT, HEX. 7/16"-20	6H, 56H, 57H, 57L	4
	G120383	WASHER, LOCK 7/16"	6H, 56H, 57H, 57L	4
1525-13	199675	WASHER, SPECIAL 15/32" (LOWER BOLT)	6H, 56H, 57H, 57L	2
1525-15	198685	BUSHING, STABILIZER SHAFT LINK - Y.	6H, 56H, 57H, 57L	4
1525-17	523301	SPACER, STABILIZER SHAFT LINK BOLT - Y.	6H, 56H, 57H, 57L	4

